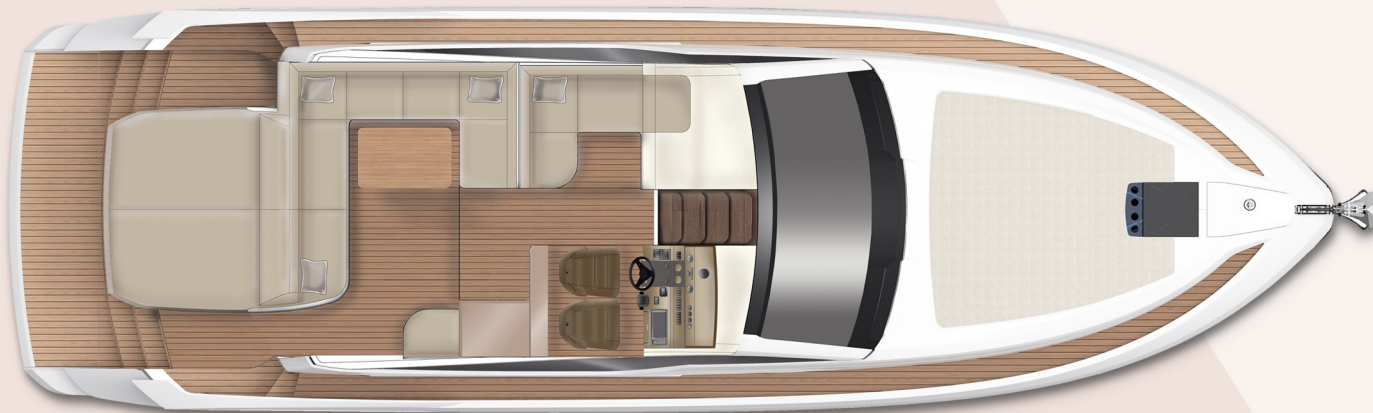
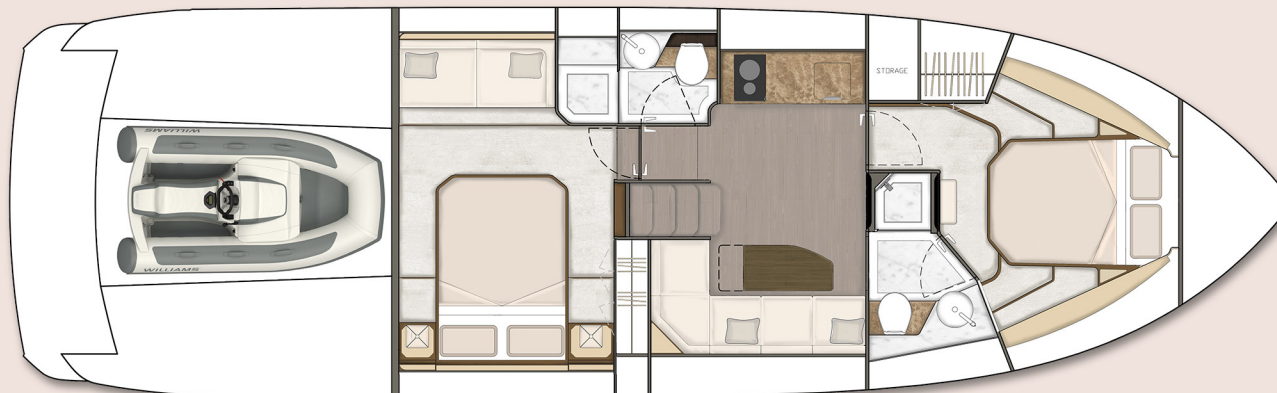




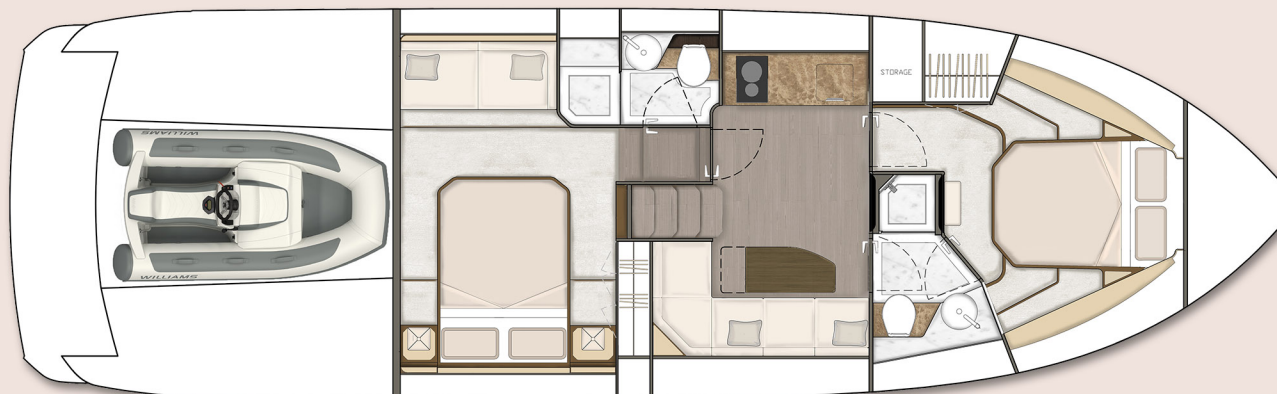
TARGA 45 OPEN



- Main Deck



- 2 Cabin - Forward Master



- 2 Cabin - Mid Master (optional)



Principal Dimensions

Length overall (incl. pulpit):	47'7" (14.53m)
Length of hull:	43'3" (13.2m)
Beam (incl. gunwale):	14'2" (4.32m)
Draft:	3'8" (1.15m) loaded
Airdraft:	15'5" (4.74m)
Transport height:	15'6" (4.76m)
Berths:	4
Fuel capacity:	286 gallons / 343 US gallons (1,300 litres)
Water capacity (incl. calorifier):	88 gallons / 105 US gallons (400 litres)
Type approval:	CE Category B
Capacity:	12 people

Engines & Performance

2 x Volvo Penta IPS600 DS-440	2 x Volvo Penta IPS650 D6-480
Max. Power: 880 hp	Max. Power: 960 hp
Drive: IPS	Drive: IPS
Fuel: Diesel	Fuel: Diesel
Max. Speed: 32 knots	Max. Speed: 34 knots

TARGA 45 OPEN

Deck	- Folding foot plinth	Cockpit	Galley
- Anchor winch & controls	- Full digital engine instrumentation including;	- Boat hook	- Ceramic hob (2 burner)
- Calibrated galvanised anchor chain (40m)	tachometers, oil pressure gauges,	- Canopy (white, no wondows)	- Crockery & cutlery (6 person)
- Chain stopper (10mm)	temperature gauges, audible alarms &	- Cup holders	- Electrical control panel
- Carbon fibre ensign staff	engine hour meters	- Engine room access hatch	- Extractor fan
- Fenders (x6)	- Garmin GMI 20 instrument display	- Fender stowage	- Eye-level storage lockers
- Full set of IMCO navigation lights	- Garmin VHF marine radio	- Fixed height GRP table	- Fire extinguisher
- Garage (to fit Williams 280 MiniJet)	- High-speed magnetic compass	- Fusion® Apollo audio	- Fridge/freezer
- Hot & cold water transom shower	- IPS joystick	- Life raft stowage	- Integrated waste bin
- Moulded non-slip deck surface	- Opening window (manual operation)	- Manual bilge pumps	- LED ceiling lights
- Riding light	- Remote anchor winch controls	- Mooring lines (4x 15m) & stowage	- Microwave combi oven
- Rubbing strake	- Searchlight control	- Moulded non-slip deck surface	- Sink with hot & cold mixer tap
- Self-stowing Delta® anchor (20kg)	- USB socket	- Step for side deck access	- Smoke alarm
- Stainless steel bow fairleads	- Volvo 7” diagnostic display	- Transom gate	- Solid Surface® worktop
- Stainless steel bow, spring & stern cleats		- Under seat storage	- Timber floor
- Stainless steel pulpit rail	Electrical Systems	- USB socket	- Underfloor larder
- Stainless steel stemhead roller	- All 240V, 24V & 12V circuits (USA: 2x 110V [220V] 60Hz)	- Waterproof speakers x4	- Venetian blind
- Stainless steel transom wing cleats	protected by circuit breakers with main electrical load control panel	- Wet bar with sink	
- Teak laid bathing platform (fixed height)	- Electrical sockets		
- Toughened glass curved single piece windscreen	- Generator	Lower Saloon	
- Twin horns	- Heavy duty circuit breakers	- Access to day head	
- Water filler	- Isolating switches to all batteries	- Eye-level storage lockers	
- Windscreen washers / wipers	- Isolation transformer (USA spec only)	- First aid kit	
	12 Volt	- Fixed height dining table	
Helm Position	- Batteries – 2x heavy duty batteries for domestic services	- LED ceiling lights	
- Autopilot	- 1x heavy duty battery for exclusive port engine starting	- Lighting to stair risers	
- Bilge pump switches with integral	- 1x heavy duty battery for exclusive starboard engine starting	- Sofa with storage under	
operating warning lights & audible alarms	- Emergency battery coupling system permits starboard engine	- Timber floor	
- Twin helm seats	to start port engine if domestic batteries accidentally discharged	- Venetian blind	
- Controls for engine bay fire extinguisher system	240 Volt		
- Cup holders	- Polarity check & earth leakage protection system		
- Electronic single-lever throttle & gear controls	- Regulated battery charger		
	- Shore power supply		

TARGA 45 OPEN

VIP/Forward Cabin	Mid Cabin	Interior Décor	Fuel System
- Bedding	- Bedding	- Choice of interior finishes selected by	- Emergency fuel shut-off valves
- Bedside tables	- Bedside tables	the Fairline Yachts Design Studio	- High capacity water separators & fuel filters
- Carpet	- Carpet	- Satin oak timber	- Individual fillers & vents to port & starboard
- Double bed	- Double bed		- Twin fuel tanks with balance pipe
- Escape hatch to foredeck with blind	- Feature windows with opening portholes	Hullform & Construction	
- Eye-level storage lockers	- Fusion® Apollo audio (when cabin is selected as master)	- Antifouling protection to hull	Freshwater System
- Feature windows with single opening porthole	- Leather paneling to aft bulkhead	- Deep 'V' hull	- Automatic, pressurised supply
- Full length mirror	- LED ceiling lights	- Design, layout & detailing by AM Yacht	- Calorifier hot water system
- Fusion® Apollo audio (when cabin is selected as master)	- Reading lights	Design and the Fairline Yachts Design Studio	- Water tank
- LED ceiling lights	- Sofa	- Electric, sliding sunroof (canvas)	
- Reading lights	- Storage drawers under bed	- Full length moulded spray deflectors	Black Waste
- Storage drawers under bed	- TV (when cabin is selected as master)	- Hull colour – White	- Holding tank
- TV (when cabin is selected as master)	- Upholstered bedhead & surround	- Integrally moulded engine bearers	
- Upholstered bedhead & surround	- Venetian blinds	- Polyurethane foam cores throughout	Commissioning
- Venetian blinds	- Wardrobes with mirrored doors	deck for strength & thermal insulation	Full pre-delivery inspection & vessel commissioning
- Wardrobes		- Resin infused hull, internal liner, deck & superstructure	at the Fairline Commissioning Centre, Ipswich, UK
	Mid Cabin En Suite	- Transverse & longitudinal strengthening stringers	
	- Electric silent-flush freshwater toilet	throughout hull	
	- Extractor fan		
	- Eye-level storage lockers	Engines & Sterngear	
	- Feature window with single opening porthole	- Automatic bilge pumps for engine	
	- Full set of bathroom fittings	bay with a manual 'on' override	
	- Full standing height shower	- Automatic engine room fire extinguisher system	
	- LED ceiling lights	- Electric engine room fans	
	- Mirror	- Electric trim tabs with cathodic protection	
	- Shower tray automatic pump-out system	- Engine room lights	
	- Solid Surface® vanity unit with locker & basin	- Engine room soundproofing	
	- Stowage locker	- Seacocks on all inlets/outlets below waterline	
	- Timber floor		
	- Towel rail		
	- Towel set		
	- Venetian blind		